



The new Jasmine Lodge-3 is a truly sophisticated holiday home with stylish, modern furnishings throughout. The spacious lounge features ceiling height windows, a luxurious, contemporary suite, log effect electric fire and double glazed front French doors. There is even a DVD point linked to the TV for top quality home entertainment.

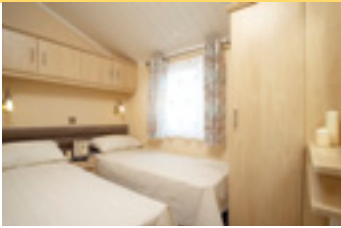
The modern fully featured kitchen includes an integrated oven, separate 5 ring hob with wok burner, a microwave oven, dishwasher and American-style fridge freezer. There is also space for an optional washer/dryer.

This beautiful leisure home is the perfect place to sit back, relax and enjoy your holiday.



Model illustrated is the 42 x 13 - 2 bedroom open plan.





INTEGRATED OVEN/GRILL
AND FIVE RING HOB
WITH WOK BURNER AND
ELECTRONIC IGNITION



LARGE CAPACITY
AMERICAN STYLE
FRIDGE FREEZER AND
DISHWASHER



SPACIOUS, LUXURY
MAIN BEDROOM
WITH EN SUITE
BATHROOM AND TOILET



LUXURY
DUVET COVERS,
PILLOWCASES AND
CUSHIONS IN
BOTH BEDROOMS



FOR FULL DETAILS OF
EXTERNAL DIMENSIONS
FOR THIS RANGE
SEE PAGES 26/27

EXTERIOR

- Plastisol coated steel pantile pitched roof
- Lagged hot and cold water exterior pipework
- Premium insulation
- Exterior lights
- Domestic PVC guttering and downpipes
- Double glazed PVCu exterior door and windows
- Double glazed PVCu Front French Doors (FFD)
- PVCu soffit and fascias
- Fully galvanised chassis with twin axle
- PVCu woodgrain effect exterior cladding – standard colour 'Sand' (colour options available)

INTERIOR

- Vaulted ceilings throughout with ceiling cornice in all rooms
- Flush internal doors with satin steel domestic style door handles
- Energy efficient lighting
- Carbon Monoxide detector, smoke alarm and fire extinguisher
- Underlay fitted beneath all carpets
- Gas combi central heating with thermostatic radiator valves

LOUNGE

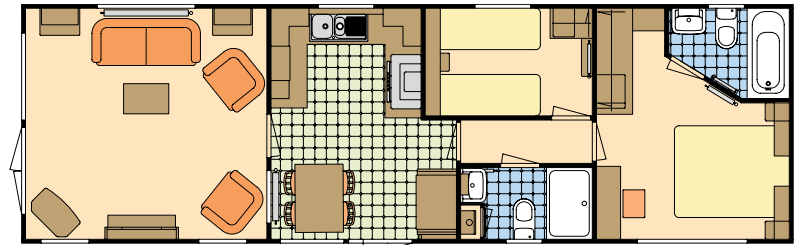
- Freestanding lounge suite with scatter cushions
- Ceiling height windows
- Dividing door between lounge and kitchen/dining area (except Open Plan model)
- Low level and wall mounted TV point (above fire)
- DVD point linked to TV
- Contemporary log effect electric fire
- Coffee table and framed print
- Vertical blinds and fully lined curtains
- Voiles

KITCHEN

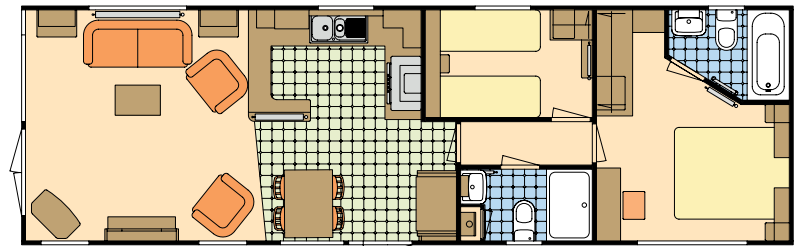
- Integrated 600 wide oven/grill with electronic ignition.
- Separate 5 ring hob with wok burner and electronic ignition
- Glass and stainless steel recirculating fan above hob
- Integrated microwave oven
- Large capacity American style stainless steel fridge freezer
- Dishwasher or washing machine
- Velux® window with integral concertina blind
- 40mm high pressure bonded laminate work surfaces with deep matching upstands
- Soft close doors and drawers
- Venetian blind

DINING AREA

- Freestanding dining table and upholstered chairs
- Vertical blinds



42 x 13 – 2 bedroom 4 berth



42 x 13 – 2 bedroom 4 berth OP

BEDROOMS

- TV point to main bedroom
- Duvet covers, pillowcases and cushions to main bedroom
- Co-ordinating duvet covers and pillowcases to twin bedroom
- Divan sprung bed to main bedroom
- Freestanding metal bed frames with interior sprung mattresses to twin bedroom
- Twin beds combine to make a double bed

- Fully lined curtains
- Voiles

BATHROOMS

- En suite bathroom with toilet
- Second shower and toilet
- Waterproof high pressure bonded wall laminate
- Thermostatic shower mixers
- Soft close WC seat
- Venetian blinds
- Wall mounted extractor fan

OPTIONS

- Fold-out sprung bed to lounge sofa
- Leather suite
- Washer/dryer to kitchen (in addition to dishwasher)
- Large capacity fridge freezer and storage cupboard in lieu of American style fridge freezer
- Canexel exterior cladding
- Timber cladding (will require routine maintenance)
- Environmental colours

TV, DVD player, and all other ornaments are for display only.