



The new Gemini-2 has been tastefully redesigned to offer a stylish yet relaxed living environment.

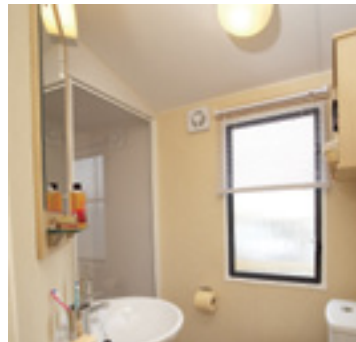
The open plan living area features co-ordinating soft furnishings, which make this charming home feel warm and cosy at all times.

With plenty of seating and a dinette style dining area adjoining the stylish kitchen, this is the ideal place to entertain friends and prepare family meals.

The Gemini-2 is now available in two levels of specification and three different sizes, giving you plenty of flexibility to choose a home that meets your precise requirements.



Model illustrated is the Gemini-2 Excel.





INTEGRATED OVEN COMPLETE WITH GRILL AND FOUR RING HOB WITH ELECTRONIC IGNITION

SPACIOUS, OPEN PLAN LIVING AREA WITH VAULTED CEILINGS

GAS FIRE WITH OPTIONAL GAS COMBI CENTRAL HEATING WITH THERMOSTATIC RADIATOR VALVES



FULLY LINED CURTAINS AND NET CURTAINS THROUGHOUT WITH VENETIAN BLIND IN BATHROOM

FOR FULL DETAILS OF EXTERNAL DIMENSIONS FOR THIS RANGE SEE PAGES 26/27

**EXTERIOR**

- Plastisol coated steel pantile pitched roof
- Logged hot and cold water exterior pipework

**INTERIOR**

- Vaulted ceilings throughout
- Flush internal doors with satin steel domestic style door handles
- Energy efficient lighting
- Carbon Monoxide detector, smoke alarm and fire extinguisher

**LOUNGE**

- Contemporary gas fire
- Fully lined curtains
- Net curtains

**KITCHEN**

- Integrated 600 wide oven and 4 ring hob with electronic ignition, incorporating grill
- Appliance shelf and socket
- Venetian blind

**DINING AREA**

- Dinette style dining area and freestanding table
- Fully lined curtains
- Net curtains

**BEDROOMS**

- Freestanding metal bed frames with interior sprung mattresses
- Twin beds combine to make a double bed if required
- Under bed storage
- Fully lined curtains
- Net curtains

**BATHROOM & WC**

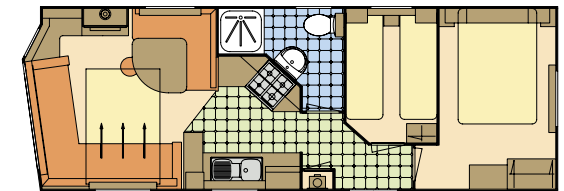
- Close coupled toilet
- Thermostatic shower mixer
- Venetian blind
- Wall mounted extractor fan to shower room

**OPTIONS**

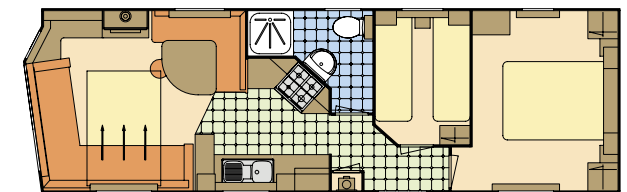
- Gas combi central heating with thermostatic radiator valves
- Double glazed PVCu exterior door and windows
- Electric plinth heaters and heated towel rails for bedrooms and bathroom
- Extra insulation
- Fridge or fridge freezer
- Environmental colours

**GEMINI-2 EXCEL layouts as shown below have the following additional features**

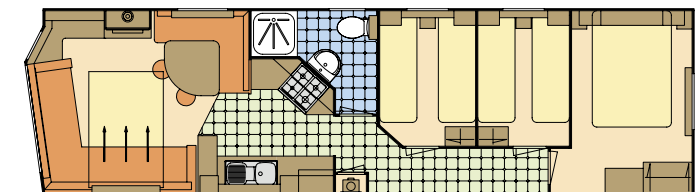
- Exterior light
- Lift up storage bed and top lockers to main bedroom
- 'Gazunda' bed to one twin bedroom
- Top lockers in twin bedrooms
- Shaver light in shower room
- Recirculating extractor fan in kitchen and additional cupboard space
- Deep Sprung seating, armrests and fabric kicking boards to lounge seating
- Fold out bed action to lounge seating
- Underlay to lounge carpet



28 x 10 – 2 bedroom 6 berth



32 x 10 – 2 bedroom 6 berth



35 x 10 – 3 bedroom 8 berth

TV, DVD player, fridge, microwave, duvets, pillows and all other ornaments are for display only.