



A classic holiday home, the Andromeda-3 exudes charm and elegance.

The beautifully furnished living area with sofa-style seating adjoins a modern fitted kitchen with integrated oven and hob – the perfect place to make family meals or entertain friends.

The dining area features a freestanding dining table and comfortable upholstered chairs.

Available with 2 and 3 bedroom layouts, the Andromeda-3 also has the option of front French doors in the lounge area.



*Model illustrated is the 35 x 12 – 2 bedroom*



INTEGRATED OVEN COMPLETE WITH GRILL AND FOUR RING HOB WITH ELECTRONIC IGNITION



SPACIOUS LOUNGE COMPLETE WITH CEILING CORNICE, MIRROR AND FRAMED PRINT



ELECTRIC FIRE WITH OPTIONAL GAS COMBI CENTRAL HEATING WITH THERMOSTATIC RADIATOR VALVES



OPTIONAL LOUNGE LAYOUT WITH FRONT FRENCH DOORS, 'L' SHAPED SETTEE AND ARMCHAIR



FOR FULL DETAILS OF EXTERNAL DIMENSIONS FOR THIS RANGE SEE PAGES 26/27

## EXTERIOR

- Plastisol coated steel pantile pitched roof
- Lagged hot and cold water exterior pipework
- Under floor insulation
- Exterior Light
- Colour co-ordinated downpipes

## INTERIOR

- Vaulted ceilings throughout with ceiling cornice in lounge and kitchen
- Flush internal doors with satin steel domestic style door handles
- Energy efficient lighting
- Carbon Monoxide detector, smoke alarm and fire extinguisher
- Underlay fitted beneath all carpets

## LOUNGE

- Optional lounge layout with Front French Doors, 'L' shaped settee and armchair (armchair not available in 28/2)
- Fold-out sprung bed to lounge seating
- Contemporary electric fire in a domestic styled fire surround
- Fully lined curtains
- Net curtains
- Framed print

## OPTIONS

- Gas combi central heating with thermostatic radiator valves
- Double glazed PVCu exterior door and windows
- Double glazed PVCu Front French Doors
- Extra insulation
- Electric plinth heaters and heated towel rail(s)
- Fridge or fridge freezer
- Environmental colours
- Canexel exterior cladding
- Rigid PVC exterior cladding
- Timber cladding (will require routine maintenance)

## KITCHEN

- Integrated 600 wide oven and 4 ring hob with electronic ignition, incorporating grill
- Recirculating hood above hob
- Appliance shelf and socket
- 40mm high pressure bonded laminate work surfaces with matching upstands
- Venetian blind

## DINING AREA

- Freestanding dining table and upholstered chairs
- Fully lined curtains
- Net curtains

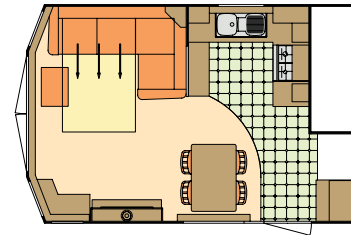
## BEDROOMS

- Freestanding metal bed frames with interior sprung mattresses
- Twin beds combine to make a double bed if required

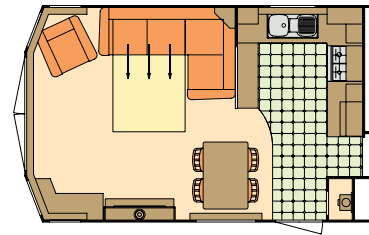
- Under bed storage
- Fully lined curtains
- Net curtains

## BATHROOM & WC

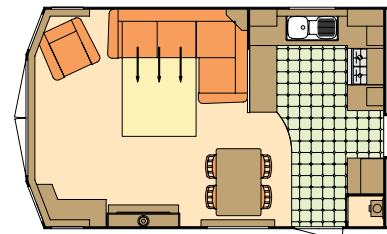
- Close coupled toilet(s)
- Thermostatic shower mixer
- Venetian blinds
- Wall mounted extractor fan to shower room



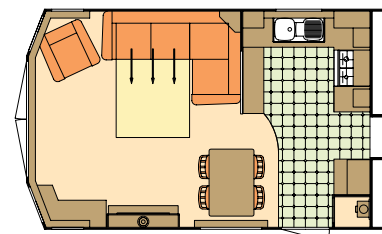
Front door option



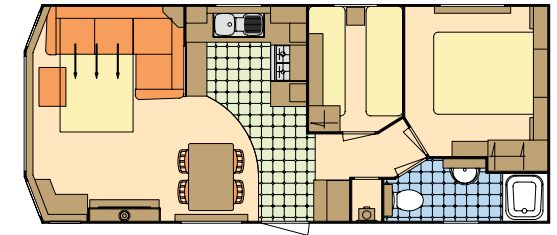
Front door option



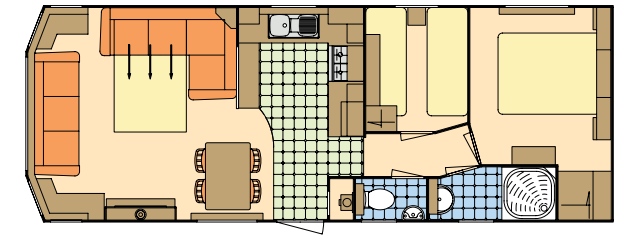
Front door option



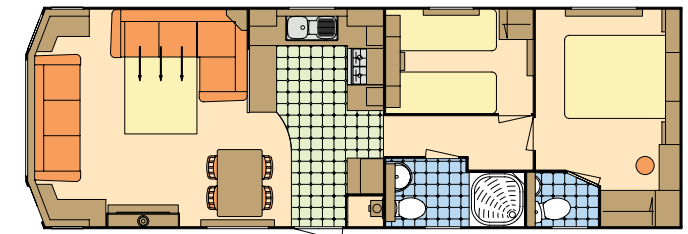
Front door option



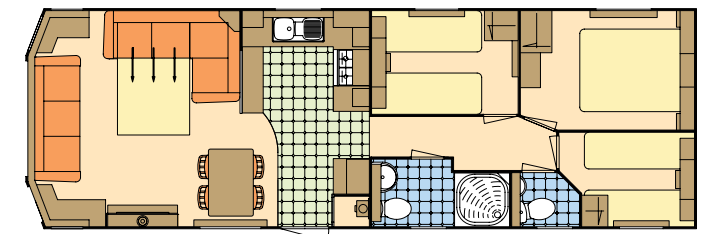
28 x 12 - 2 bedroom 6 berth



32 x 12 - 2 bedroom 6 berth



35 x 12 - 2 bedroom 6 berth



36 x 12 - 3 bedroom 8 berth

TV, DVD player, fridge, microwave, duvets, pillows and all other ornaments are for display only.